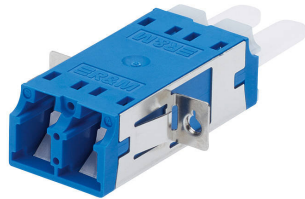


Product information

Adapter LC-Duplex PC, blue, ceramic SM, C, screwable

R820416
12 pcs



Adapter LC-Duplex with semi-transparent dust caps. Quick mounting clip and M2 thread integrated.

- Adapter LC-Duplex
- 2 Philips head screws M2 x 8, blue galvanized

090.7331

Technical Data

DESCRIPTION [UNIT]	VALUE/VALUE RANGE
Standard	UL Listed according to IEC 61754-20
Connector class	adapter
Protection class IP (A)	IP 20
Number of connectors (A)	1
Connector type (A)	LC-Duplex
Polishing plug (A)	PC
Attenuation grade IL (A)	C
Connector color (A)	blue
Sleeve material	ceramic
Adapter fastening method	end cap
Fiber type	singlemode (SM)

Mechanical Data

DESCRIPTION [UNIT]	VALUE/VALUE RANGE
Dimensions	55mm x 22mm x 9.35mm (W x H x D)
Material	steel: X10CrNi18-8 (1.4310) / plastic: PBT, fiber-glass reinforced (halogen-free)

LC-Duplex singlemode adapter in acc. with IEC 61754-20. Adapter body plus flange and integral quick-mounting clip and M2 thread, color metallic, material X10CrNi18-8. Housing blue (singlemode PC), material PBT / UL 94 V-0, zirconia (ceramic) alignment sleeve, integral self-closing metal laser protection flaps, semi-transparent plastic dust covers, allowing optical testing with test lasers without removing the covers. The adapter qualified in acc. with IEC 61753-1 for category U (uncontrolled environment).

Optical specifications:








- Delta insertion loss: ≤ 0.2 dB, testing method acc. to IEC 61300-3-4


Mechanical specifications:

- Mating cycles: min. 500
- Pull-out force: min. 70 N

Optional:

Visual coding, mechanical coding and lock protection.

	Description	PU	Product No.
	Color Coding LC-Duplex Adapter, green	1 pcs	R820806
	Color Coding LC-Duplex Adapter, blue	1 pcs	R820807
	Color Coding LC-Duplex Adapter, turquoise	1 pcs	R820810
	Color Coding LC-Duplex Adapter, orange	1 pcs	R820809
	Color Coding LC-Duplex Adapter, red	1 pcs	R820812
	Color Coding LC-Duplex Adapter, yellow	1 pcs	R820811
	Color Coding LC-Duplex Adapter, violet	1 pcs	R820814

	Description	PU	Product No.
	Color Coding LC-Duplex Adapter, anthracite	1 pcs	R820813